



Identify and Control Printing Costs



Can You Answer These Questions?

- How many printers, copiers, MFPs do you have?
- Are they being properly used? Too much? Too little?
- How often are they in need of service?
- How often are the printers out of toner?
- How old are they?
- What is your current meter read submission process?
- How much time does it take?
- How much IT time is spent supporting printing devices?

Don't know?

What if YOU didn't need to worry about your printing devices?

Trends Impacting Printing Fleets

- The Gartner Group estimates that corporations spend between 1-3% of their annual revenue on printing
- The average office employee spends \$15,000 a year in document output*
- The cost of printing continues to increase due to higher page volumes and increased use of color devices
- 40% of all IT / help desk calls are printer/copier related**
- The average office has 1 printing device for every 4 employees when the optimum ratio is 1 to 10**
- The average printing device is in an error state 55% of the time***

* Source: All Associates

** Source: The Gartner Group

***PrintFleet Inc. database research 12/9/05



Financial Impacts of Printing Devices In Organizations

- Increased page volumes = increased imaging costs
- Capital budgets are being stretched with the erratic purchase of output technology, reactive supplies ordering and emergency servicing
- The related costs of administration, management and supply inventory continue to rise
- High cost of IT time is spent dealing with printing device maintenance issues and detracts from the departments core initiatives
- Little or no device placement management results in high-cost devices receiving the volume of pages

* Source: DocuAudit International

AXESS™ Can Help

Managing and maintaining your imaging fleet is frustrating and time consuming. This doesn't have to be your problem anymore. Free yourself from printing devices with AXESS™.

With a simple secure download, we can collect real time data from your printing devices and uncover ways to manage and optimize your print technology from an easy to user web interface. Work with us to develop a more efficient and productive print management strategy.

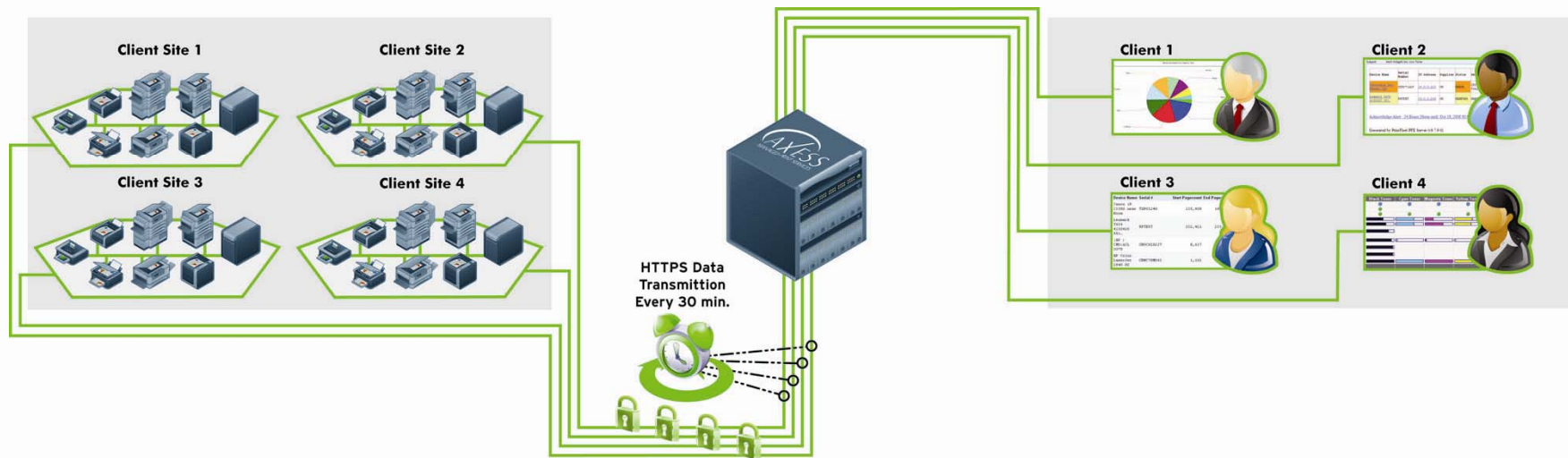
Partner with us to collaborate on a print management plan of action that works for you.



AXESS™ Software: How it Works

The AXESS™ Data Collection Agent is installed on a networked PC running Windows 2000/XP or higher, or directly onto a Windows 2003 server. This software application runs in the background, collecting and transmitting critical imaging metrics to the AXESS™ secure web server.

From then on, your printer information will be available 24 hours a day, 7 days a week via the AXESS™ secure website. No personal or user data is collected with the software; only the core metrics needed to maintain and manage your printing assets are gathered.



AXESS™ Software: Intelligent Technology

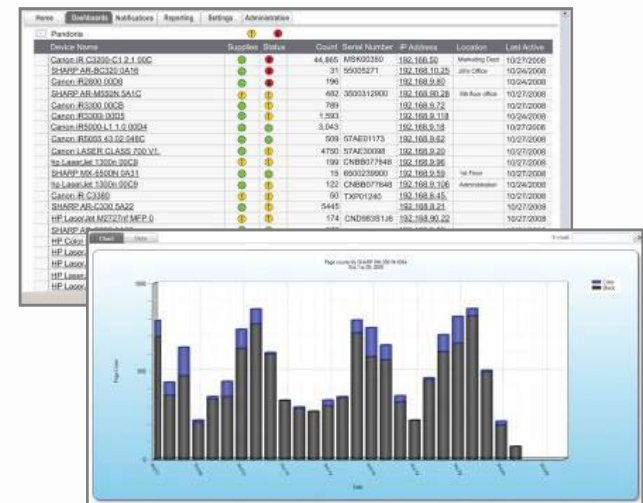
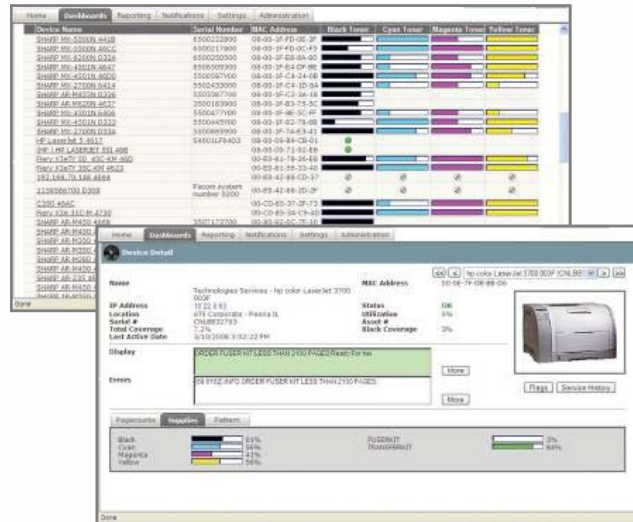
The Data Collection Agent uses one-way communication, but two-way can be enabled for automatic updates. The collected data is sent via Port 443 (HTTPS), Port 80 (HTTP) or Port 21 (FTP) to the AXESS™ secure web server.

The network traffic created by a DCA network scan is minimal and will vary on the number of IP addresses being scanned. The network traffic created by the DCA when scanning a single subnet (254 IP addresses) is approximately equal to the network traffic created by visiting a single standard webpage.

AXESSSM Collects Powerful Information

This intelligent technology gives us the ability to proactively maintain your printing assets so you can maximize uptime and minimize costs. AXESSTM collects critical information from your networked printers, copiers, MFPs and fax machines, such as:

- Current status
- Supplies levels
- Page counts
- Model descriptions
- Serial and asset numbers
- Printer locations
- Cost-per-Page tracking
- Automated service alerts
- Utilization
- Historical trending reports



AXESS™ : Detail View

- Simple meter read display
- Device coverage and utilization
- Supplies re-ordering
- Device display
- Device errors

The screenshots show the 'Device Detail' view for two different printers. The top screenshot is for a Ricoh Aficio 1515 A27C (K2168900283), which has a 'Warning' status due to 'No Paper: Tray 1 (13200)'. The bottom screenshot is for an HP Color LaserJet 2820 (CNFC6200C1), which is in a 'Ready' status. Both views include a table of device information, a 'Display' section for messages, and a 'Supplies' section with meter readouts and re-ordering options.

Device 1: Ricoh Aficio 1515 A27C (K2168900283)

Name	Widgets - NC607281 - RICOH Aficio 1515 A27C	Status	Warning
IP Address	172.26.162.124	Utilization	95%
Location		Asset #	
Serial #	K2168900283	Black Coverage	5%
Total Coverage	5%	MAC Address	00-00-74-A7-43-01
Last Active	6/4/2008 9:42:23 AM		

Device 2: HP Color LaserJet 2820 (CNFC6200C1)

Name	Widgets - Widgets Inc. - HP Color LaserJet 2820	Status	OK
IP Address	193.0.105	Utilization	0%
Location	Boise ID USA	Asset #	1143976
Serial #	CNFC6200C1	Black Coverage	5%
Total Coverage	20%	MAC Address	00-14-38-9A-16-EC
Last Active	5/29/2008 9:55:13 AM	ID Test TAG	

Supplies Section (Device 2):

Color	Level	Order	Level
Black	76.3%	IMAGING DRUM	75%
Cyan	54.1%	SUPPLY TYPE 9	70%
Magenta	63.1%		
Yellow	50%		

Summary Table (Device 2):

	Copier Mono	Fax Mono
	16	0
	137	1
	384	16
	181	3
	20,571	593
	47,116	3,558

AXESS™: Supplies View

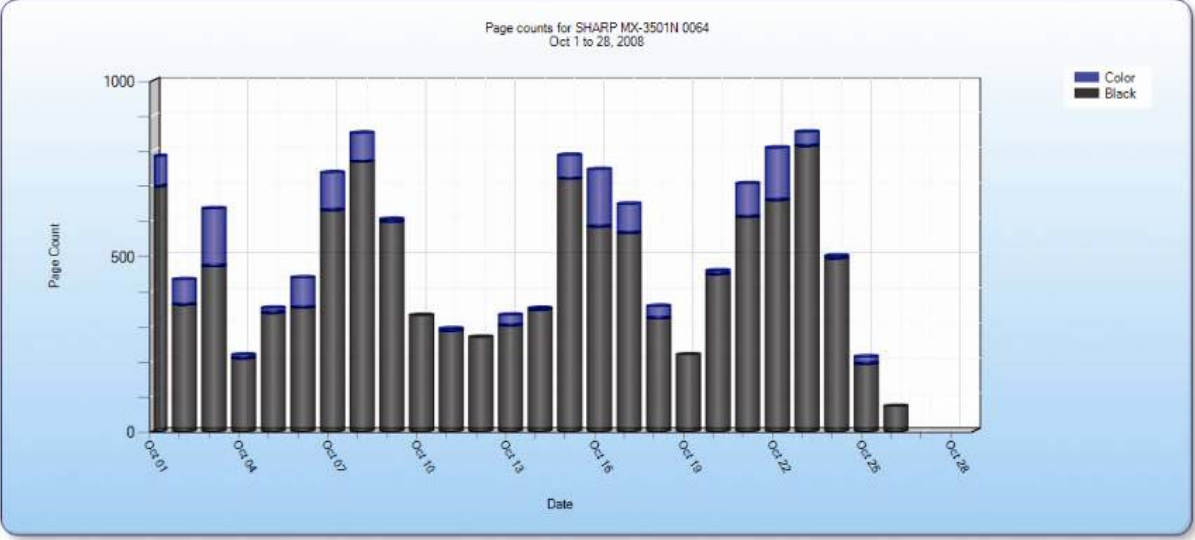
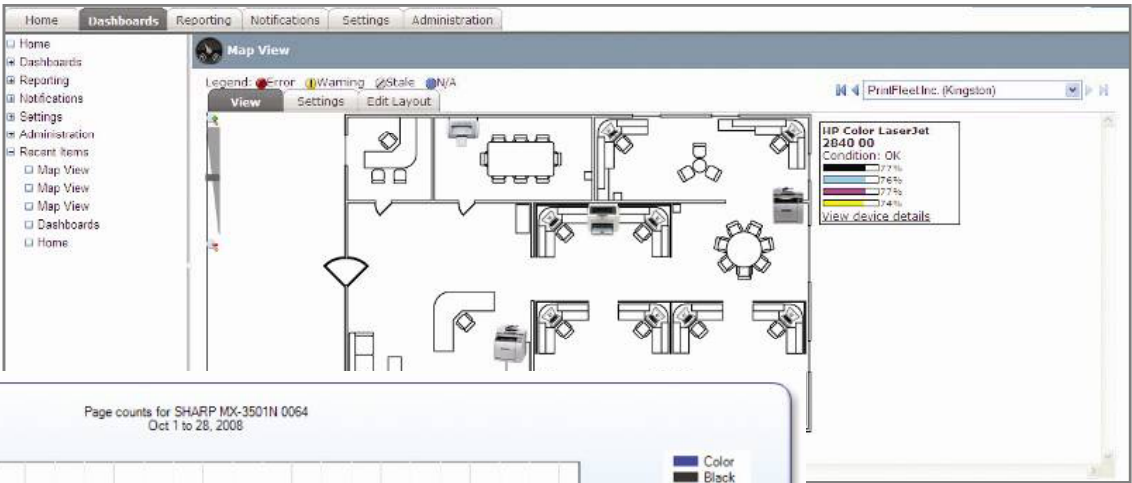
- Supplies Status
- Device Status
- Page Counts
- IP Address
- Physical Location
- Asset Number

The screenshot displays the 'Supplies View' interface. At the top, there are navigation tabs: Home, Dashboards, Reporting, Notifications, Settings, and Administration. Below these, there are two main data views. The top view is a detailed table with columns for Device Name, Serial Number, MAC Address, and four toner levels (Black, Cyan, Magenta, Yellow). The bottom view is a summary table with columns for Device Name, Supplies Status, Status, Count, Serial Number, IP Address, Location, and Last Active. The status icons (green, yellow, red) indicate the health of the supplies.

Device Name	Supplies	Status	Count	Serial Number	IP Address	Location	Last Active
Canon IR C3200-C1 2.1 00C	●	●	44,865	MSK00350	192.168.9.50	Marketing Dept	10/27/2008
SHARP AR-BC320 0A16	●	●	31	55005271	192.168.10.25	Jill's Office	10/24/2008
Canon iR2800 00D8	●	●	196		192.168.9.80		10/24/2008
SHARP AR-M550N 5A1C	●	●	482	3500312900	192.168.90.28	5th floor office	10/27/2008
Canon iR3300 00CB	●	●	789		192.168.9.72		10/27/2008
Canon iR3300i 00D5	●	●	1,593		192.168.9.118		10/24/2008
Canon iR5000-L1 1.0 00D4	●	●	3,043		192.168.9.18		10/27/2008
Canon iR5055 43.02 048C	●	●	509	57AE01173	192.168.9.62		10/27/2008
Canon LASER CLASS 700 V1.	●	●	4750	57AE30098	192.168.9.20		10/27/2008
hp LaserJet 1300n 00C9	●	●	199	CNBB077648	192.168.9.96		10/27/2008
SHARP MX-5500N 0A31	●	●	15	6500239900	192.168.9.59	1st Floor	10/27/2008
hp LaserJet 1300n 00C9	●	●	122	CNBB077648	192.168.9.106	Administration	10/24/2008
Canon iR C3380	●	●	50	TXP01240	192.168.8.45		10/27/2008
SHARP AR-C330 5A22	●	●	5445		192.168.8.21		10/27/2008
HP LaserJet M2727nf MFP 0	●	●	174	CND983S1J6	192.168.90.22		10/27/2008
SHARP AR-C330 5A22	●	●	677		192.168.9.85		10/24/2008
HP Color LaserJet 2840 00	●	●	2	CNHC78M043	192.168.9.89		10/24/2008
HP LaserJet 4100 MFP 0077	●	●	326	USLGY00241	192.168.90.32		10/24/2008
HP LaserJet 4000 Series 0	●	●	59	USEF171962	192.168.9.94		10/24/2008
HP LaserJet 4000 Series 0	●	●	856	USNC128736	192.168.9.11	Finance	10/27/2008
HP LaserJet P2015 Series	●	●	8	CNBJP09882	192.168.10.20		10/24/2008

AXESSSM: Asset Reports

- Volume Reports
- Individual page counts hourly, daily, and monthly
- Individual toner levels
- Introduction date vs. page count
- Flag Report
- Device Location Mapping



What Are You Waiting For?

Let us and AXESS™ show you the way to control printing costs and heighten printing efficiencies.

Contact us today to get started.



585-272-9000
WWW.METROCARTRIDGE.COM

